



DYAMACH

SHAPE OF IDEAS

Dental Milling Machines



A mix of creativity, experience and skill that allows us to supply customized future-oriented solutions for your business.

The certainty of a reliable partner who can support you in developing your activities. Our wide range of milling machines, completely designed and manufactured in our Italian headquarters, will perfectly satisfy all your needs.

The screenshot displays the DYAMACH software interface. At the top, the logo and the date 'Friday 28 September 2023 9:34 AM' are visible. Below the header, there are navigation tabs for 'JOBS', 'TOOLS', 'BLANKS', and 'STATUS'. The 'JOBS' tab is active, showing a 'Jobs Queue' table with columns for job ID, blank, processing duration, and tools. Below this is a 'Job history' table with columns for job ID, status, start date, start time, and duration. A 'HELP' button is located at the bottom left, and an 'ERROR HISTORY' button is at the bottom right.

Jobs Queue	Blank	Processing duration	Tools
DT2GG020221012_158.cnc	Zirconia 001	1h 21 min	• ø 24
DT2GG020221012_158.cnc	Zirconia 002	3h 11 min	• -
DT2GG020221012_158.cnc	Ceramica 001	1h 22 min	• ø 24
DT2GG020221012_158.cnc	N/D	4h 45 min	• ø 24

Job history	Status	Start date	Start time	Duration
DT2GG020221012_158.cnc	Completato	06/12/22	16:43:32	1:43:22
DT2GG020221012_158.cnc	Completato	05/12/22	18:34:22	0:22:11
DT2GG020221012_158.cnc	Fallito	05/12/22	09:12:11	2:34:44



Dyamach innovation.

Top performance in a compact design.



reddot winner 2024
best of the best



TOOL LIFETIME

The system has been optimized in order to reduce vibration, thus maximizing tool lifetime and precision in each stage of the process.

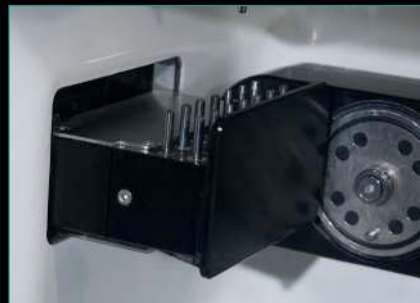
EASE OF USE

The key characteristic of the DS1 is its straightforward operation: easy loading and maintenance make it among the most versatile machines in the Dyamach range.

QUICK CLAMPING

A system designed to ensure the precision of blank holder repositioning, optimizing processing times.

The 5-axis compact milling machine for dry machining processes, ideal for crowns and bridges.



Size:
52 x 54 x H 65 cm
20.47 x 21.26 x H 25.59 inch



Weight:
65 Kg / 143.3 lb.



Spindle power:
0,75 Kw



Spindle speed:
100.000 rpm



Machining type:
Dry



Collet diameter:
4 mm - 3 mm (optional)
0.16 inch - 0.12 inch (optional)



Spindle tilt degrees:
A-axis 360° / B-axis -180° / +40°



Automatic calibration



Removable tool rack:
14 tools



Integrated Panel PC



Agile and precise, characterised by exceptional accessibility. DS1 is our response to the need to make the entire range of soft materials required for the construction of dental prostheses rapidly and with reliable results. The new Dyamach NC greatly simplifies the user experience, thanks to its clear and intuitive structure. The machine features exceptional robustness, a hallmark of all our products.

DISILICATE

Veneers and temporaries manufactured in 5 axes, with guaranteed performance in terms of speed and tool life.



PRE-MILLED

DS1 enables the processing of pre-milled units in a simple and precise manner.



SLM SECONDARY MACHINING

The robustness of DS1+ allows for extremely precise machining of products printed using Selective Laser Melting.



HD MILLING

90-degree milling strategy that provides better definition of the interproximal area, greater tooth separation, and improved detail of gingival features.



PMMA & COMPOSITE

DS1 precisely mills both PMMA and composite, ensuring quality and versatility for temporary restorations and aesthetic prosthetics.



CROWNS & BRIDGES FROM DISCS

It is possible to precisely mill bridges and crowns from titanium and cobalt-chrome discs, ensuring maximum quality and durability.



Size:
DS1 Plus: 52 x 54 x H 65 cm / 20.47 x 21.26 x H 25.59 inch
Bench: 72 x 69 x H 93 cm / 28.35 x 27.17 x 36.61 inch



Weight:
DS1 Plus: 75 Kg / 165.35 lb.
Bench: 100 Kg / 220.46 lb.



Spindle power:
0,75 Kw



Spindle speed:
100.000 rpm



Machining type:
Dry / Wet



Collet diameter:
4 mm - 3 mm (optional)
0.16 inch - 0.12 inch (optional)



Spindle tilt degrees:
A-axis 360° / B-axis -180° / +40°



SLM secondary machining



Automatic calibration



Removable tool rack:
14 tools



Integrated Panel PC



Agile and precise, characterised by exceptional accessibility. DS1 PLUS is our response to the need to perform machining operations on materials such as fiberglass-ceramics and SLM secondary machining with proven simplicity and performance. The machine is characterised by its extreme robustness, a hallmark of all our products. The new Dyamach NC greatly simplifies the user experience, thanks to its clarity and usability.



Everything *tilts* around an idea.

The versatile solution to your daily challenges.



TILTING HEAD

Thanks to this feature, AS1 allows to overcome the mechanical limitations of standard milling machines, achieving unprecedented angles.

SLM SECONDARY MACHINING

Ability to refine products obtained by means of laser additive manufacturing technology.

EASE OF USE

The key characteristic of the AS1 is its straightforward operation: easy loading and maintenance make it among the most versatile machines in the Dyamach range.

MATERIALS PERFORMANCE

Tool life and speed assured with AS1, able to adapt quickly to a wide range of milling contexts.

QUICK CLAMPING

A system designed to ensure the precision of blank holder repositioning, optimizing processing times.

SPRINKLER

Patented coolant management system. The flow automatically adapts based on the machining process.

The 5-axis milling machine incorporating original engineering solutions, capable of guaranteeing high performance for all types of materials.



Size:
86 x 78 x H 103 cm
33.86 x 30.71 x H 40.55 inch



Weight:
300 Kg / 661.39 lb.



Spindle power:
1 Kw (AS1) / 3.7 Kw (AS1 Power)



Spindle speed:
60.000 rpm



Machining type:
Dry / Wet



Collet diameter:
6 mm - 4 mm (optional) - 3 mm (optional)
0.24 inch - 0.16 inch (optional) - 0.12 inch (optional)



Spindle tilt degrees:
A-axis 360° / B-axis -92° / +42°



SLM secondary machining



Automatic calibration



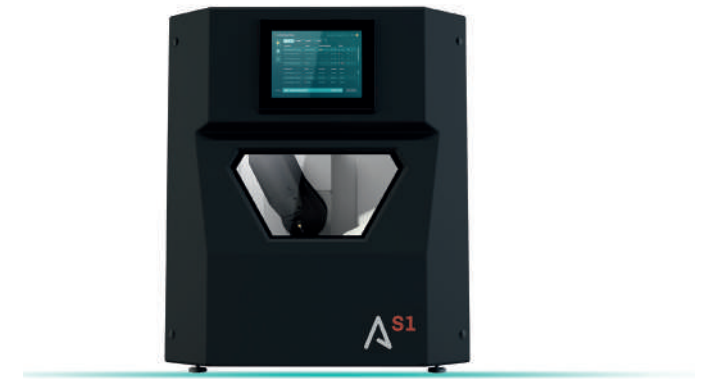
Removable tool rack:
18 tools



Rapid loading / unloading



Integrated Panel PC



AS1

AS1 is equipped with a tilting head spindle that allows the use of innovative milling strategies in accordance with the context. Precision and performance of tools are guaranteed also when machining soft and hard metals. The blank holder loading/unloading system, removable tool rack, and the structure of the numerical control were designed specifically to optimize versatility and speed of execution in your laboratory. AS1 is also available in the Power version with an upgraded 3.7 kW spindle.

VERSATILITY

AS1 handles various types of machining thanks to a wide range of dedicated fixtures.

FLEXIBILITY

The loader allows for 24/7 operation to handle production peaks.

AUTOMATION

Thanks to the automatic loading system, AS1 PRO operates independently from the operator, allowing personnel to focus on more important tasks than simple loading and unloading.

The 5-axis milling machine incorporating original engineering solutions, capable of guaranteeing high performance for all types of materials.



Size:
127 x 80 x H 178 cm
50 x 31.5 x H 70.08 inch



Weight:
510 Kg / 1124.36 lb.



Spindle power:
1 Kw (AS1 PRO) / 3.7 Kw (AS1 PRO Power)



Spindle speed:
60.000 rpm



Machining type:
Dry / Wet



Collet diameter:
6 mm - 4 mm (optional) - 3 mm (optional)
0.24 inch - 0.16 inch (optional) - 0.12 inch (optional)



Spindle tilt degrees:
A-axis 360° / B-axis -92° / +42°



SLM secondary machining



Automatic calibration



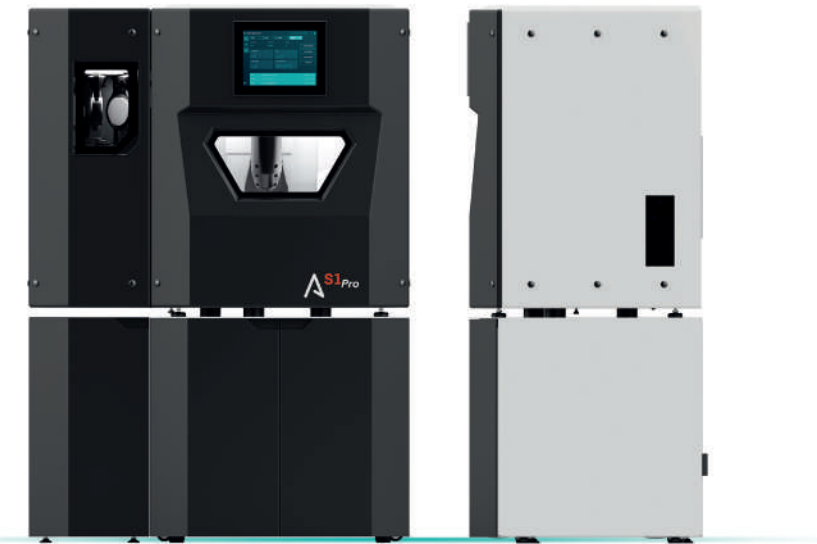
Removable tool rack:
18 tools



Rapid loading / unloading



Integrated Panel PC



AS1 PRO is characterized by a tilting spindle head that allows for experimenting with original milling strategies, according to the milling context, allowing unmanned machining. Precision and tool performance are ensured even on metals and hard materials. The loading/unloading system of the blank holder, the removable tool rack, and the numerical control structure have been specifically designed to maximize versatility and execution speed within your workshop. AS1 PRO is available in the Power version with an upgraded 3.7 kW spindle.



Power and reliability.

Your ideal partner for metal machining processes.



SYSTEM STABILITY

A highly compact milling chamber, incorporated in a system in which the thickness and mass of the components reduce vibration levels to zero.

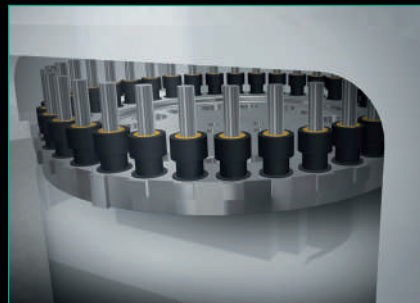
AXES MOVEMENT

The travel distance of the axes and spindle movement minimize loads on the mechanical elements of the milling machine. The patented rotary A axis allows spindle torque to be fully exploited without affecting system kinematics.

POWER AND TOOL LIFETIME

The metal milling speed does not affect the long-term integrity and performance of the system. Tool lifetime extends to incomparable levels.

The stable and powerful 5 axis milling machine that delivers unparalleled performance in the production of titanium and cobalt-chromium elements.



Size:
125 x 70 x H 160 cm
49.21 x 27.56 x H 62.99 inch



Weight:
590 Kg / 1300.73 lb



Spindle power:
2,6 Kw



Spindle speed:
50.000 rpm



Machining type:
Dry / Wet



Collet diameter:
6 mm / 4 mm (optional) / 3 mm (optional)
0.24 inch / 0.16 inch (optional) / 0.12 inch (optional)



Spindle tilt degrees:
A-axis 360° / B-axis -225°/+45°



SLM secondary machining



Carousel tool rack:
36 tools



Rotative A-axis



Integrated Panel PC



DT2 is our vertical CNC milling machine with 5 continuous axes, powerful and reliable, suitable for milling centers, capable of accompanying your business across new frontiers. The system's stability means we can minimize tool wear while maximizing the workpiece machining speed. Thanks to the production results of the DT2, safety and quality of execution become a decisive stimulus to drive your laboratory's productivity and profitability.



S1



S1+



S1 | S1Pro



T2

Zirconium	●	●	●		Zirconium
Wax	●	●	●		Wax
Composite	●	●	●	●	Composite
Plastic materials	●	●	●	●	Plastic materials
PMMA	●	●	●	●	PMMA
Carbon	●	●	●	●	Carbon
Glass fiber		●	●	●	Glass fiber
Glass ceramic		●	●		Glass ceramic
PEEK	●	●	●	●	PEEK
Pre-milled		●	●	●	Pre-milled
Titanium disc		● (C&B only)	●	●	Titanium disc
Cobalt-chrome disc	● (C&B only)	● (C&B only)	●	●	Cobalt-chrome disc
Laser-melting		●	●	●	Laser-melting
Aluminum		●	●	●	Aluminum

Best performance ●

Best performance ●



DYAMACH Friday 28 september 2023 9:34 AM

JOB'S TOOLS BLANKS STATUS

RACK 1
RACK 2
RACK 3 ✓
RACK 3
RACK 4
RACK 6

1	2	3	4	5	6	7	
V ∅2.4 Ti	S ∅2.1 Zr	B ∅1.8 Cr-Co	D ∅2.4 Cr-Co	T ∅1.8 PMMA	G ∅2.4 Cr-Co	D ∅2.1 PMMA	
8	9	10	11	12	13	14	D ∅2.1 Cr-Co
V ∅2.4 Ti	S ∅2.1 Zr	+	D ∅2.4 Zr	T ∅1.8 Cr-Co	G ∅2.4 PMMA	D ∅2.1 Cr-Co	

LEGEND USED TOOLS LIBRARY LIBRARY

HELP



DYAMACH

Via del Commercio, 7/C - 36065 Mussolente (VI)

Tel. +39 0424 576231 - Fax +39 0424 577609

www.dyamach.com - info@dyamach.com